

200 nm



Mag = 28.00 K X

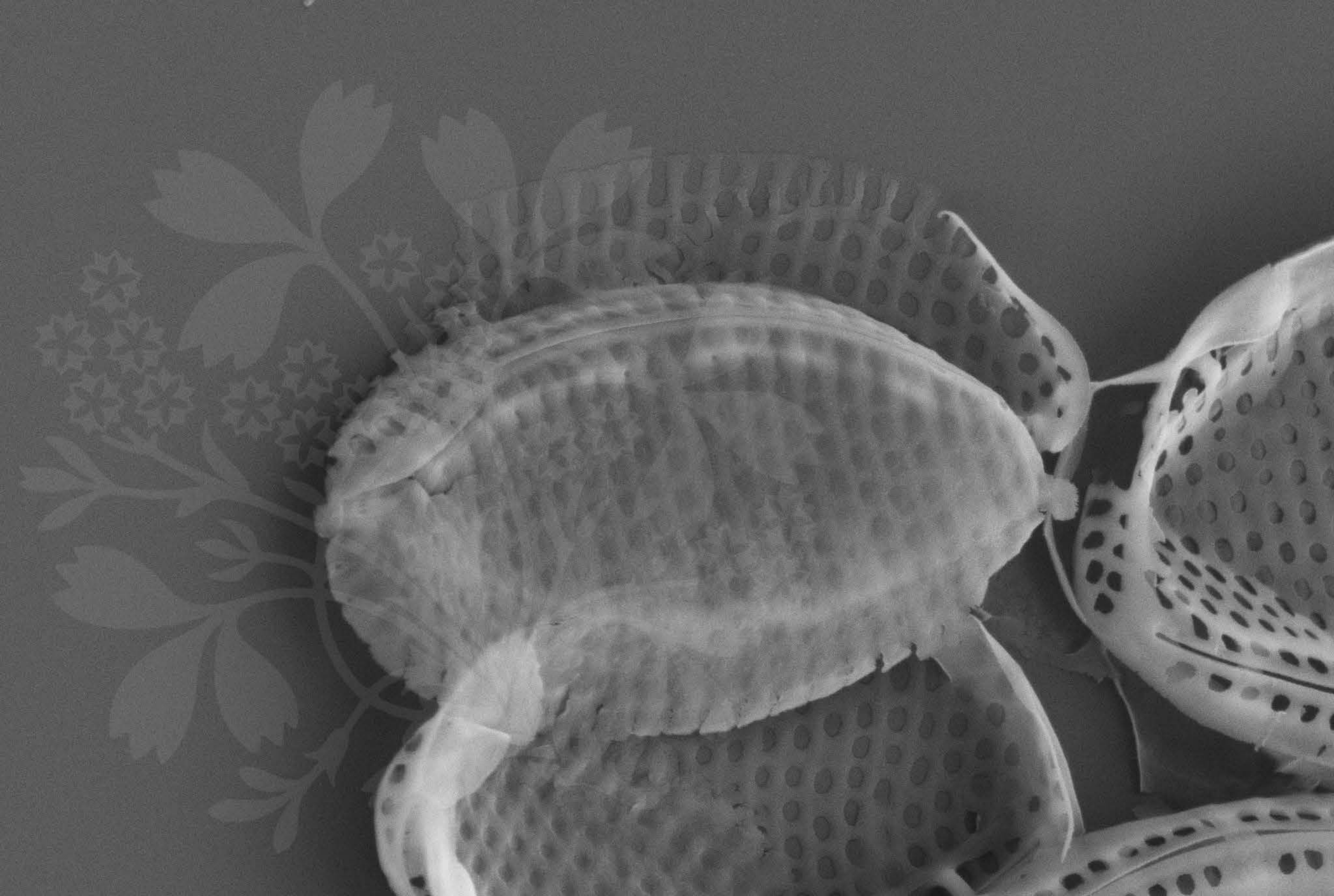
EHT = 5.00 kV

Signal A = SE2 Date :2 Jul 2015

WD = 4.3 mm

File Name = DM1003_01.tif





200 nm



Mag = 35.00 K X

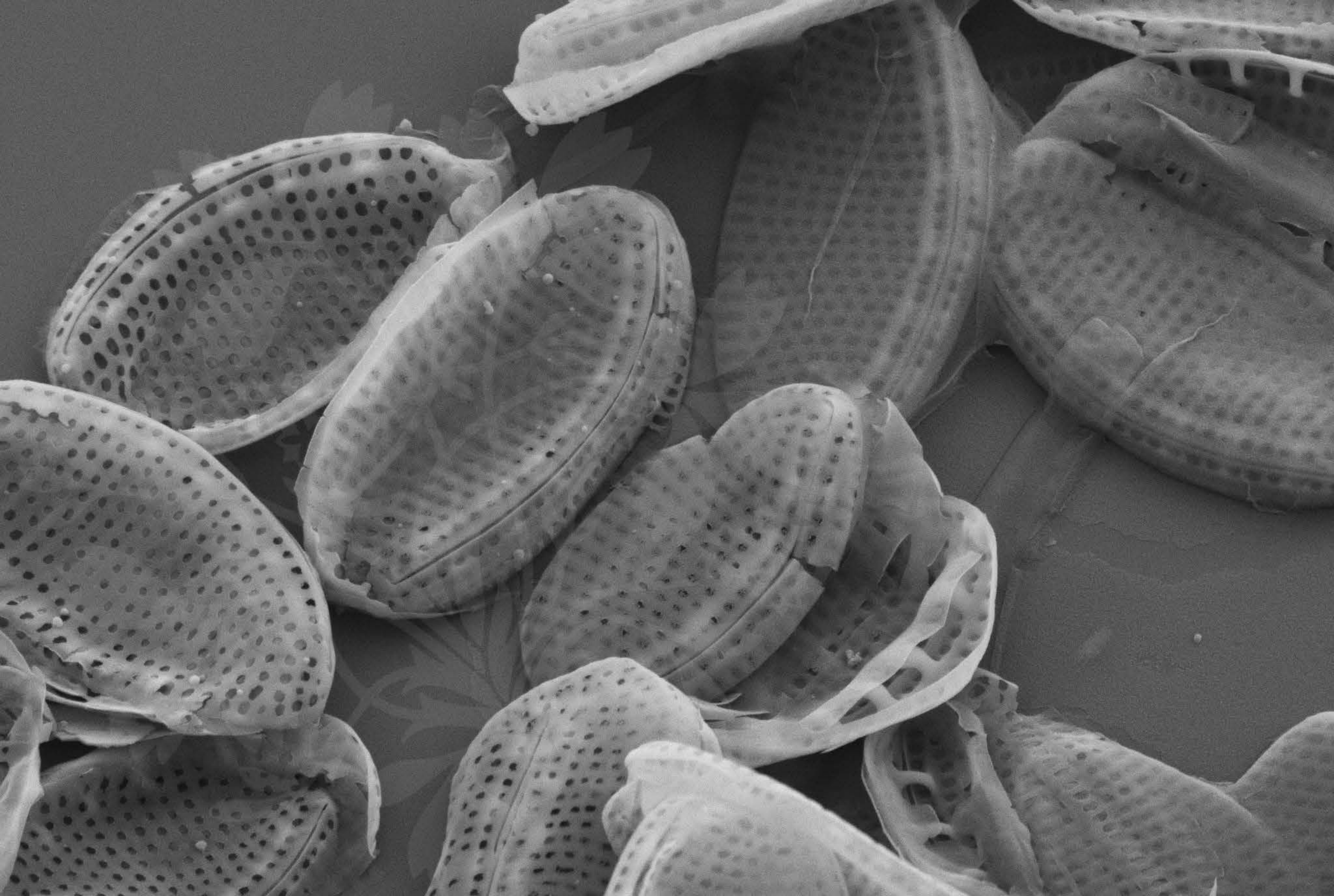
EHT = 5.00 kV

Signal A = SE2 Date :2 Jul 2015

WD = 4.3 mm

File Name = DM1003_02.tif





1 μm



Mag = 20.00 K X

EHT = 5.00 kV

Signal A = SE2 Date :2 Jul 2015

WD = 4.3 mm

File Name = DM1003_03.tif

